

STAGE V
CERTIFIED

HANGCHA



HANGCHA GROUP CO., LTD.

Factory site: 666 Xiangfu Road,
Hangzhou, Zhejiang, China (311305)

Tel: +86-571-88926735 88926755
Fax: +86-571-88926789 88132890

sales@hcforklift.com www.hcforklift.com



Follow us on
Facebook



Follow us on
YouTube



Follow us on
WeChat



Download "Hangcha
Forklift" App



ISO45001:2018



ISO14001:2015



ISO9001:2015



HANGCHA trucks conform
to the European Safety
Requirements.

XF SERIES

DIESEL / GASOLINE / LPG
COUNTERBALANCED TRUCKS

With capacities of 1,000 to 3,500kg

HANGCHA GROUP CO., LTD. reserves the right to make any changes without notice concerning colors, equipment, or specifications detailed in this brochure, or to discontinue individual models. The colors of trucks, delivered may differ slightly from those in brochures.

HANGCHA be with you at every stage

Efficient, reliable solutions for your demands



STAGE V & TIER 4F

With Hangcha you can meet all Stage V/Tier 4f emissions standards which provides customer demands for value, innovation and performance. The technologies include common rail fuel systems, diesel oxidation catalysts (DOC) and diesel particulate filters (DPF). Designed and optimised to every engine model, our forklift truck maximises efficiency and reliability.



KUBOTA

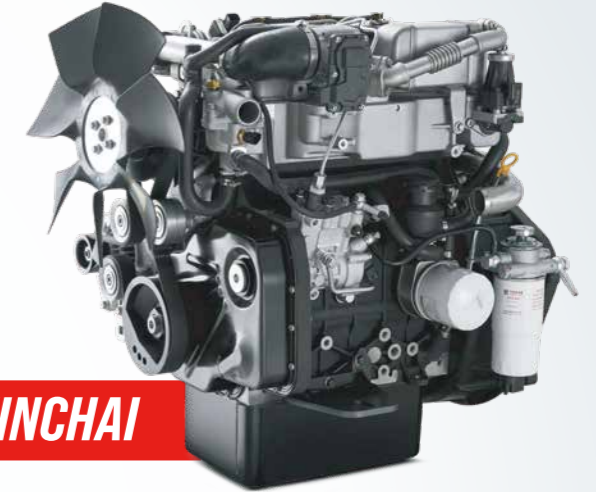
► Emissions Compliance

Meeting rigid emissions regulations can be a challenge for any company. V2607-CR-E5B engines have been designed to comply with stringent regulations: EU StageV EPA/CARB Tier4 F.

► Advanced DPF Technology

► Clean and Quiet Power

► Great Flexibility

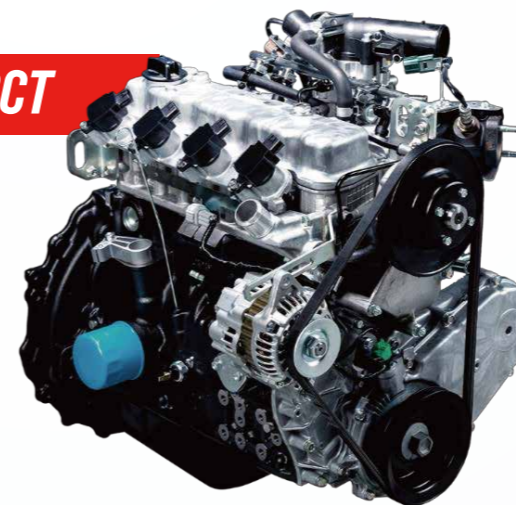


XINCHAI

No.	Capacity	Series	Manufacturer	Engine	Drive power	Model	Emission Std.	Transmission	Power (kw/rpm)
1	1.5-3.5t	XF	KUBOTA	V2607-CR-E5B	Diesel	CPCD15/18/20/25/30/35-XW97F/B1	EU StageV EPA/CARB Tier4 F	F/OKAMURA	37.4/2400
2	2.0-3.5t	XF	KUBOTA	V2607-CR-TE5B	Diesel	CPCD20/25/30/35-XW98F	EU StageV EPA/CARB Tier4 F	F	47.3/2400
3	1.5-3.5t	XF	KUBOTA	WG2503-GL-E3-HCF-1	DUAL(GAS/LPG)	/	Stage V/ EPA Tier 2/CARB Tier3	F/OKAMURA	43.5/2600
4	1.5-3.5t	XF	KUBOTA	WG2503-L-E3-HCF-1	LPG	/	Stage V/ EPA Tier 2/CARB Tier3	F/OKAMURA	LP6:43.5/2600 GAS:42.8/2600
5	1.5-1.75t	XF	XINCHAI	3E22YG51P464	Diesel	CPCD15/18/-XH7F/B1	Stage V	F/OKAMURA	34/2400
6	2.0-3.5t	XF	XINCHAI	3E22YG51	Diesel	CPCD20/25/30/35-XH7F/B1	Stage V	F/OKAMURA	44.8/2400

Note: Stage V applied for European Union also including Israel and Turkey
Tier4 Final applied for North American
F means full floating transmission

GCT



► Eco-friendly engines compliant with global emission regulations.

Global standard forklift engines with top-class of output and reliability performance.

ENGINE TYPE	Vertical Inline 4-cylinder · Water cooled · OHV
FUEL	Gasoline · LPG
FUEL SYSTEM	Electronic Controlled, Gasoline : Injector · LPG : Injector
EMISSION REGULATION	CARB SIP LSI-1/ EPA Tier2/ EU STAGE V

No.	Capacity	Series	Manufacturer	Engine	Drive power	Model	Emission Std.	Transmission	Power (kw/rpm)
1	1.5-1.75t	XF	GCT	GCT GK21LPG EU-StageV CERT	LPG	CPYD15/18-XH1F/B	Stage V	F/OKAMURA	38.4/2700
2	2.0-3.5t	XF	GCT	GCT GK25LPG EU-StageV CERT	LPG	CPYD20/25/30/35-XH3F/B	Stage V	F/OKAMURA	43.4/2700
3	1.5-1.75t	XF	GCT	GCT GK21 LPG 1G001 EKHO0	LPG	CPYD15/18-XH23F/B1	CARB SIP LSI-1/ EPA Tier2/ EU STAGE V	F/OKAMURA	43/2700
4	1.5-1.75t	XF	GCT	GCT GK21 DUAL 1G001 ECH00	DUAL LPG/GAS	CPQYD15/18-XH24F/B1		F/OKAMURA	LP:43/2700 G:40/2700
5	2.0-3.5t	XF	GCT	GCT GK25 LPG 1G001 ELHO0	LPG	CPYD20/25/30/35-XH21F/B1		F/OKAMURA	47/2700
6	2.0-3.5t	XF	GCT	GCT GK25 DUAL 1G001 EDHO0	DUAL LPG/GAS	CPQYD20/25/30/35-XH22F/B1		F/OKAMURA	LP:47/2700 G:44.5/2700

Note: Stage V applied for European Union also including Israel and Turkey
Tier4 Final applied for North American
F means full floating transmission

COMFORTABLE OPERATION

Optimal visibility in all directions create the best conditions for high productivity through relaxed and safe working.



▶ The new, relocated easy-to-see LCD meter lets the operator check on all aspects of operational status at a glance.



▶ The new automobile-style light/turn-signal lever and forward-reverse lever are ergonomically designed and arranged to improve comfort and productivity.



▶ The small diameter steering wheel with tilt adjustment provides the ideal operating position. The superior responsiveness of the steering wheel optimizes maneuverability even in narrow spaces.



▶ The parking brake is specially developed. The operational force is reduced by 30%.



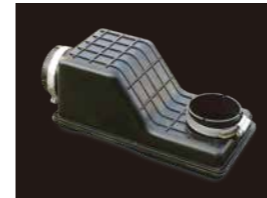
▶ The automobile-style suspended pedals provide more ergonomic operation.



In developing the new XF Series, comfort and ease of operation is carefully considered, for example, to improve vibration levels, compound engine damper and full floating power train are adopted. Comfortable operating environments for operator also contribute to increased productivity.



In addition to rubber damper between frames and steering axle, compound engine damper and full floating power train achieve flexible connection between frames and driving system, as a result, traveling vibrations and vibrations from the driving system are significantly reduced.



The enlarged capacity of optimized exhaust muffler, the intake muffler and the noise shield technologies provide significantly lower noise levels.

▶ The optional Electro-hydraulic proportional control system contributes more sensitive and precise load handling. The easy-to-operate levers provide total load handling operation. An armrest is provided to reduce fatigue.



The new wide-open, non-slip step makes getting in and out easy and safe.

EASY MAINTENANCE

Careful design facilitates inspection and servicing. Easy maintenance reduces the amount of downtime and helps to reduce cost also.

▶ The cover on the Panel can be lifted up simply to check the brake fluid.

▶ The easy-to-operate latch provides quick access to the engine compartment.

▶ The two-piece design makes the floorboard easy to lift and remove for access to the power train.

▶ The fasteners of the radiator cover can be turned easily by hand to enable quick inspections or servicing.



SOFTLY

▶ In addition to the soft landing system, the soft lifting system is adopted (front lifting cylinders of triplex mast and full free duplex mast), as a result, the noise and shock of the mast significantly decreases.

WIDER

▶ The developed front lifting cylinders with smaller outer diameter give the operator superior forward visibility. The double lifting cylinders provide better forward visibility.

WIDER

WIDER 90%

▶ The extra foot space is provided to reduce operator fatigue significantly.

PRODUCTIVITY

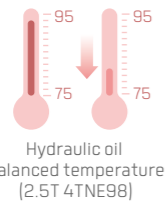
Dynamic load sensing hydraulic steering system, Efficiency lighting system, lower fuel consumption, combine to provide increased productivity and reduced operating costs.



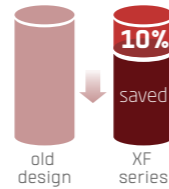
Interactive instrument: The instrument adopts 4.0-inch color LCD display with four interactive buttons, and has one CAN bus communication function. The communication protocol is compatible with CANopen and SAE J1939 standards.



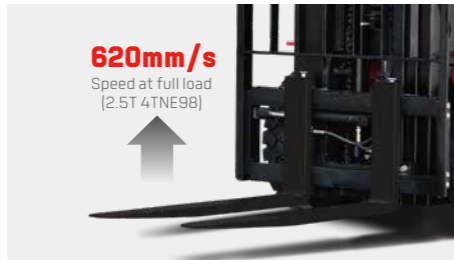
The new Dynamic load sensing hydraulic steering system contributes to reduce loss of hydraulic and improve energy efficiency.



By optimizing transmission design, the power train provides higher efficiency. The fuel consumption is reduced **by 10%**.



The new efficiency lighting system employs LED illuminant and new type reflector to reduce energy consumption, improve significantly illumination performance and prolong work time.



SAFETY

A wide range of technologies are applied to ensure absolute safety for both the operator and those in the surrounding.



▶ The locking device of the engine hood damper and parking brake help add to safety.



▶ An optional rear-pillar assist grip with a horn button enhances safety of operator while traveling in reverse.



▶ The operator presence sensing system incorporates lifting/tilting and traveling locking function. When the operator leaves the seat, the system automatically locks lifting / tilting and disables traveling to ensure safety.

▶ A throttling device is adopted to avoid the mast being out of control even some pipes are broken.

RELIABILITY

By focusing on enhancing reliability, reducing downtime, the XF series is able to make the greater productivity for customer.



▶ The new aluminum alloy transmission with full floating structure features excellent heat dissipation capability, more and thicker disc meet the most demanding applications.



▶ The new stamped air cleaner featuring tangential intake, double seal with safety filter is durable, corrosion-free and vibration-resistant, provides better filter efficiency and lower intake resistance than the previous.

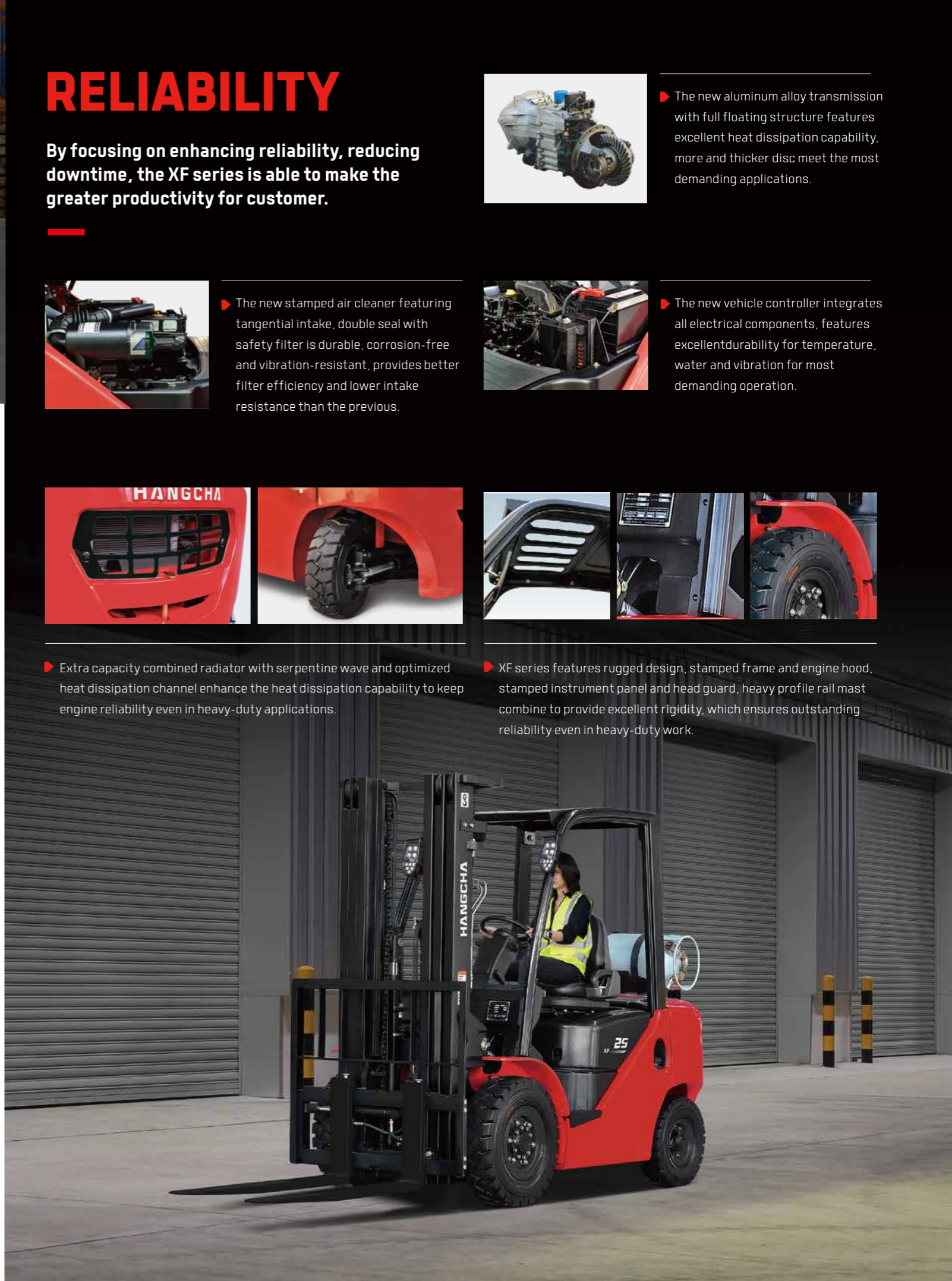


▶ The new vehicle controller integrates all electrical components, features excellent durability for temperature, water and vibration for most demanding operation.



▶ Extra capacity combined radiator with serpentine wave and optimized heat dissipation channel enhance the heat dissipation capability to keep engine reliability even in heavy-duty applications.

▶ XF series features rugged design, stamped frame and engine hood, stamped instrument panel and head guard, heavy profile rail mast combine to provide excellent rigidity, which ensures outstanding reliability even in heavy-duty work.



Features

Truck	Standard	Options
PVC ceiling	●	
Multifunctional interactive instruments(EU StageV)	●	
Wide-view rearview mirror	●	
Tilt Cylinder Boot	●	
Combination LED lighting system	●	
Steering wheel adjusting device	●	
Traction pin	●	
Counterweight grille cover	●	
Dual front wheel		○
Perforated overhead guard		○
Cab		○
Additional L/R rearview mirrors		○
Heater		○
Fire extinguisher (1kg)		○
Front windshield and wiper		○
Fully-suspended seat		○
Customer paint		○
External spark extinguisher		○
LED rear working light		○
Solid tire		○
Rotating handle of water tank lid		○
Fan		○
Fuel tank cap with lock		○
Right rear armrest with horn button		○
Reinforced wheel rim		○
Steering		
Wet braking drive axle		○
Chassis		
Skidproof pedal	●	
Rubber pedal	●	
Engine hood spring	●	
Control		
Mechanical handbrake	●	
Integrated combination switch	●	
Fingertip system		○
Multi-segment adjustable speed limit		○
Hydraulic		
Electro-hydraulic steering	●	
Hydraulic oil recycling filter	●	
Speed limiting valve of the mast	●	
2nd valve	●	
Combination LED lighting system		○
5th valve		○
Power		
High-efficiency air intake silencer	●	
Fan protection device	●	
Dissipater grille cover		○
Dual air filter		○
High-position exhauster		○
Electronics		
Low-temperature starting battery	●	
OPS system		○
Blue light		○
Audible and visual alarm		○

Mast	Standard	Options
Duplex mast	●	
Full free duplex mast		○
Triplex mast		○
Wider fork carriage		○
Heightened load backrest		○
Different length of fork		○
Transmission		
Fully-suspended gearbox	●	
High-efficiency air filter	●	
Low-noise gear pump		○
Attachments		
Paper roll clamp		○
Sideshifter		○
Soft package clamp		○
Carton clamp		○
Rotatable roll clamp		○
Rotating fork		○
Oil barrel clamp		○
Push-pull device		○
Load stabilizer		○
Fork sleeve		○
Tipping clamp		○
Bucket		○
Multi-purpose barrel clamp		○
Crane arm		○
Hook		○
String Pole		○
Weighing system		○
Special fork		○